



Steinbeis
Qualitätssicherung und
Bildverarbeitung GmbH

Introducing PixLabelCV

Redefining Precision in Image Annotation



Labeling of an injection molded part with defect type short shot defect for semantic segmentation

Empower Your Annotation Process

PixLabelCV stands at the forefront of image annotation technology, merging speed, precision, and data privacy into one dynamic package. Designed for both novices and experts in machine learning and deep learning paradigms, PixLabelCV opens the door to a new era of efficient and accurate data labeling, without the need to upload your data to another company's servers.

Key Features:

- **Swift and Accurate:** Leverage advanced computer vision algorithms like watershed and flood fill for pixel-perfect annotations.
- **Enhanced Precision:** Tailor your annotations with integrated tools for unmatched accuracy in complex segmentation tasks.
- **Offline and Private:** Enjoy the freedom to annotate images anywhere, anytime, without compromising data privacy.
- **High-Speed Processing:** Harnesses your system's GPU for rapid algorithm execution, delivering fast and precise annotations.
- **Future-Ready:** With plans to integrate the Segment-Anything Model (SAM), PixLabelCV is set to incorporate the latest semantic segmentation AI models.

Why PixLabelCV?

- **Versatility in Application:** From medical imaging to intricate landscape datasets, PixLabelCV is built to handle the most challenging segmentation tasks. It was especially designed and built for custom labeling tasks like industrial quality inspection.
- **Streamlined Setup:** Ready straight out of the box—no complex installations, no servers. Begin immediately.
- **Community-Driven:** As we look to the future, PixLabelCV will evolve with contributions from our users, continuously enhancing its capabilities.



Steinbeis
Qualitätssicherung und
Bildverarbeitung GmbH

Werner-von-Siemens-Straße 9
98693 Ilmenau / Germany

Phone +49 (0) 36 77 · 46 90 59 0
 Telefax +49 (0) 36 77 · 46 90 59 11

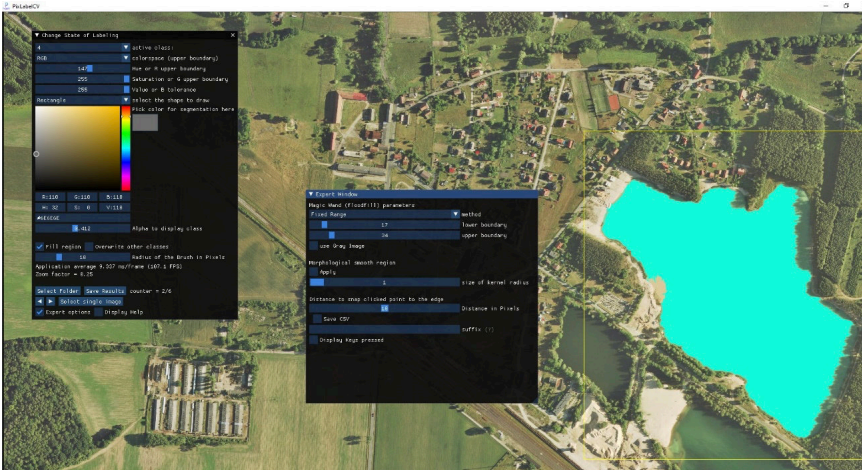
E-Mail info@sqb-ilmenau.de
 Internet www.sqb-ilmenau.de

Contact

M. Sc. Dominik Schraml
 Phone +49 (0) 36 77 · 46 90 59 16
 E-Mail dominik.schraml@sqb-ilmenau.de

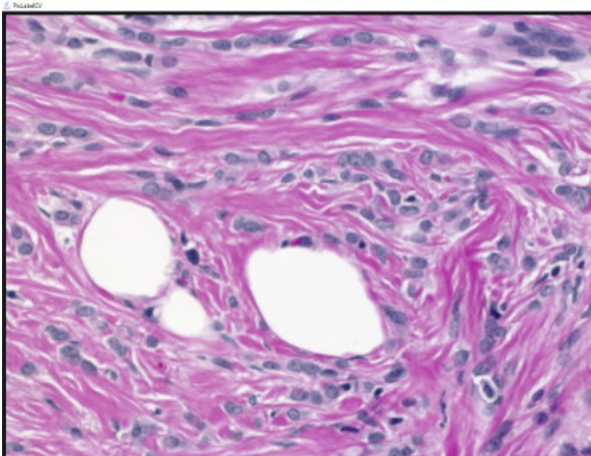
Dipl.-Ing. Steffen Lübbecke
 Phone +49 (0) 36 77 · 46 90 59 10
 E-Mail steffen.luebbecke@sqb-ilmenau.de

Can handle very large images like from aerial photography

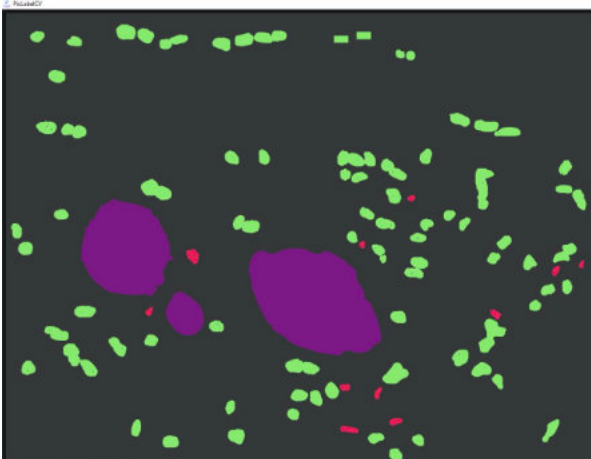


Apply image processing operations such as thresholding to quickly segment large areas of the image.

Computer vision algorithms that are particularly suitable for labeling medical data



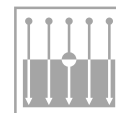
Input:
 histopathological
 image to be labeled



Result:
 pixel-accurate mask of
 the relevant tissue
 classes, here high-
 lighted in color against
 the dark background



**Products
 Service**



**Development
 Research**



**Consulting
 Training**

Get Started Today

Discover how PixLabelCV can elevate your projects.
 Visit www.sqb-ilmenau.de/PixLabelCV to learn more and download the software.